

Rockin' Oliver!

Words by Patrick J. Durward, Music by Chuck Berry



Intro
Fast Rock $\text{♩} = 160$
N.C.

The Intro section consists of three staves. The top staff is a treble clef with a key signature of one flat and a 4/4 time signature. The middle staff is labeled 'Gtr. 1 (over)' and contains a melodic line with a 'mf' dynamic marking. The bottom staff is a bass clef with a key signature of one flat and contains a bass line with a 'B' marking.

Verse
C6
Rhy. Fig. 1A

The Verse section consists of two staves. The top staff is a treble clef with a key signature of one flat and a 4/4 time signature. The middle staff is labeled 'Gtr. 2 (chord)' and contains a rhythmic pattern with 'mf' and 'acc.' markings. The bottom staff is a bass clef with a key signature of one flat and contains a bass line.

- 1 He's cute, he's blond a ton of fun and blue eyed too.
- 2 He's a zap of electricity on stage, he might blow a fuse or two.
- 3 Boy spirits of the old workhouse from an old northern town

The first line of lyrics is accompanied by musical notation on two staves. The top staff is a treble clef with a key signature of one flat and a 4/4 time signature. The bottom staff is a bass clef with a key signature of one flat. The lyrics are written below the top staff.

The second line of lyrics is accompanied by musical notation on two staves. The top staff is a treble clef with a key signature of one flat and a 4/4 time signature. The bottom staff is a bass clef with a key signature of one flat. The lyrics are written below the top staff.

- 1 He attends the prep school scene whoo!
- 2 Cause he's Rockin' Oliver uniformed prep boy star.
- 3 Still hanging around cause they're waiting to hear

The third line of lyrics is accompanied by musical notation on two staves. The top staff is a treble clef with a key signature of one flat and a 4/4 time signature. The bottom staff is a bass clef with a key signature of one flat. The lyrics are written below the top staff.

39

- 1 South London born precocious good-mannered
- 2 Cause he's Rockin' Oliver he plays a real mean guitar.
- 3 Rockin' Oliver boot out that be bop sound.

40

End Bly - Fig. 1

- 1 A singer of renown born in 1945 in Old London Town - o
- 2 Elvis shakes his pelvis, Chubby Checker does the twist.
- 3 Bill Fagin, David Freeman, the Artful Bopper too

Gtr. 1 w/ Bly - Fig. 1 (1 3) (over)

Gtr. 2 w/ Bly - Fig. 1A (2 lines)

- 1 A grey-shorted, red blazer-wearing, always caring Oliver Philip Brownlow!
- 2 Chuck Berry plays the guitar, Buddy Holly's music does the trick.
- 3 Along with a host of ghosts Dick 'n John. Be bop be bop be bop ditta ditta be bop.

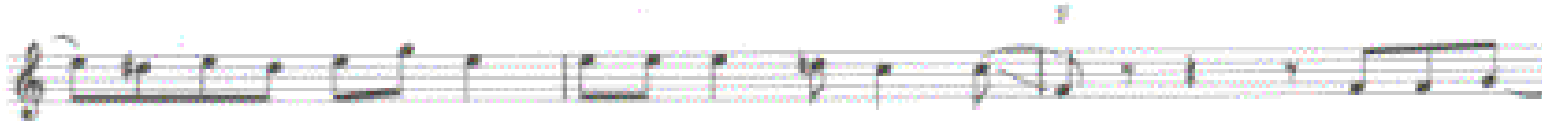
F

G4

- 1 He's the be bop boy yeah baby! He's the be bop boy yeah yeah oh yeah!
- 2 He's the be bop boy yeah baby! He's the be bop boy yeah yeah oh yeah!
- 3 He's the be bop boy yeah baby! He's the be bop boy yeah yeah oh yeah!

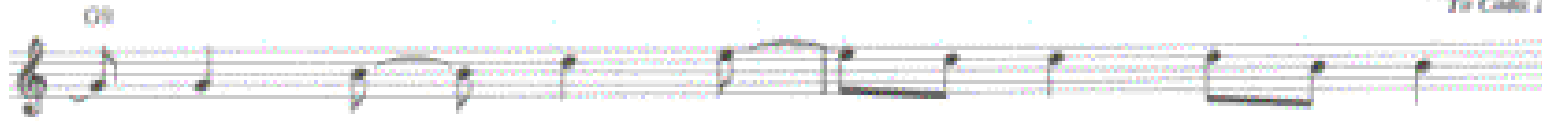


- 1 Rockin' Oliver is his a.k.a.and he's singing a be bop song.
- 2 Rockin' Oliver is his a.k.a.and he's singing a be bop song.
- 3 Rockin' Oliver is his a.k.a.and he's singing a be bop song.



- 1 If you want you can sing along too.
- 2 If you want you can sing along too.
- 3 If you want you can sing along too.

To Coda 1
To Coda 2



- 1 He's gotta red Fender Stratocaster guitar whoo!
- 2 He's gotta red Fender Stratocaster guitar whoo!
- 3 He's gotta red Fender Stratocaster guitar whoo!

Guitar Solo
Gtr. 2: w/ Rhythm Fig. 1A
C6

G9

C6

D.S. al C6

⊕ Coda 1

C6

Or. 1

P.M.

Guitar Solo

Or. 2 of Rhy. Pg. 1A

C6

F

G9

3. A

This system contains three staves. The top staff is a treble clef staff with a C6 chord marking above it. The middle staff is a guitar staff with a complex melodic line. The bottom staff is a bass staff with a rhythmic accompaniment.

⊕ Coda 2

This system contains three staves. The top staff is a treble clef staff with a C6 chord marking above it. The middle staff is a guitar staff with a melodic line. The bottom staff is a bass staff with a rhythmic accompaniment.

Quatro-Guitar Solo

Gr. 2 w/ Rhy. Fig. 1A

C6

This system contains two staves. The top staff is a treble clef staff with a C6 chord marking above it. The bottom staff is a bass staff with a rhythmic accompaniment.

This system contains two staves. The top staff is a treble clef staff with a C6 chord marking above it and a 'Begin fast' instruction. The bottom staff is a bass staff with a rhythmic accompaniment.

Fedici

This system contains two staves. The top staff is a treble clef staff with a C6 chord marking above it. The bottom staff is a bass staff with a rhythmic accompaniment.